



Province of the
EASTERN CAPE
EDUCATION

TOURISM

GRADE 12

MULTIPLE CHOICE QUESTIONS

TERM 1 TOPICS:

- **DOMESTIC, REGIONAL AND INTERNATIONAL TOURISM**
- **MAP WORK AND TOUR PLANNING**

All the multiple choice questions in this document were sourced from previous NSC and EC provincial question papers.

This document consists of 29 pages.

Four options are provided as possible answers to the following questions. Choose the answer and write only the letter (A–D) next to the question number.

TOPIC: DOMESTIC, REGIONAL AND INTERNATIONAL TOURISM

CONTENT: GLOBAL EVENTS OF INTERNATIONAL SIGNIFICANCE

2014 NOV NSC

1.1.1 The 2014 FIFA World Cup, a global event, has the following characteristic:

- A The host country is not allowed to get sponsorships for the event.
- B Only the host country is responsible for funding the entire event.
- C Only the host country is responsible for granting media rights to other countries.
- D The host country co-organises the event, which has multi-country participation

2015 NOV NSC

1.1.2 The 2015 Cricket World Cup was jointly hosted by ...

- A Pakistan and India.
- B Australia and New Zealand.
- C England and the West Indies.
- D India and Sri Lanka.

1.1.3 The COP 20 conference on global warming, held in Lima, Peru in 2014 is an example of ...

- A a global sporting event.
- B a travel trade exhibition.
- C a conference on climate change.
- D the Paris fashion week.

NOV 2016 NSC

1.1.4 The ... virus, found mainly in South America, caused panic in the tourism industry in 2016.

- A bird flu
- B SARS
- C Ebola
- D Zika

1.1.5 A global event that happens every four years:

A



B



C



D



NOV 2018 NSC

1.1.6 The image of a country hosting a global event will be enhanced when ...

- A unknown sponsors are involved in the event.
- B deadlines during the preparation process are met.
- C the event is advertised on one media platform.
- D local communities are not allowed to sell their products.

FEB-MARCH 2015 NSC

1.1.7 A negative impact of South Africa hosting the 2010 FIFA World Cup:

- A There were too many foreigners in South Africa.
- B There was a decline in the value of the rand.
- C There was a demand for tourism products and services.
- D There was a decrease in domestic tourism.

FEB-MARCH 2016 NSC

- 1.1.8 The 2015 Rugby World Cup held in England was an example of a ...
- A global summit.
 - B non-sporting global event.
 - C global political event.
 - D global sporting event.

FEB-MARCH 2017 NSC

- 1.1.9 This country played host to both the 2014 FIFA World Cup and the 2016 Summer Olympics:
- A England
 - B India
 - C Brazil
 - D South Africa
- 1.1.10 A possible negative impact on the environment when a country hosts a global event:
- A Increased publicity
 - B Investment opportunities
 - C Job creation
 - D Mass tourism

FEB-MARCH 2018 NSC

- 1.1.11 An annual event hosted in South Africa:
- A Wimbledon
 - B Winter Olympics
 - C Tour de France
 - D Comrades Marathon

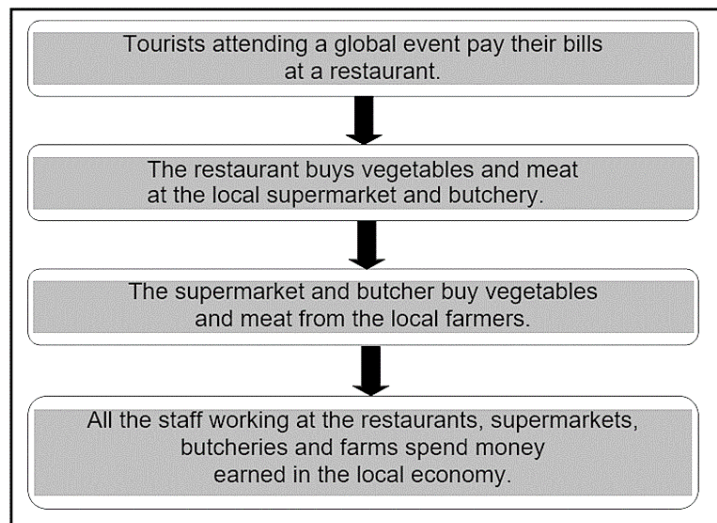
MAY-JUNE 2018 NSC

- 1.1.12 The full term/name for G8 in the 2016 logo below is ...



- A Gulf eight leaders.
- B German top eight economies.
- C Great eight countries.
- D Gifts from eight governments.

1.1.13 A heading that describes the process in the flow diagram below:



- A Voluntary donation
- B Economic upsets
- C Global recession
- D Multiplier effect

MAY-JUNE 2018 NSC

1.1.14 A positive impact on domestic tourism when South Africa hosts a global event:

- A Domestic and international tourists pay higher prices
- B Tourists from North America go on post-event tours
- C Many South Africans leave the country to go abroad
- D South Africans travel to and spend money at the event

1.1.15 The city in which the following conference was held in 2013:



- A Cancun
- B Durban
- C Doha
- D Warsaw

1.1.16 This city will host the International Olympic Committee's Summer Games in 2016:

- A Cape Town
- B Stockholm
- C Rio de Janeiro
- D Buenos Aires

SEPT 2016 EC

1.1.17 This country will host the FIFA World Cup in 2018:

- A Qatar
- B South Korea
- C Malaysia
- D Russia

1.1.18 In 2015, the leaders of the G7 met in Germany for their annual ... to discuss the state of the global economy.

- A summit
- B conference
- C debate
- D seminar

SEPT 2017 EC

1.1.19 This city will host the International Olympic Committee's Summer Games in 2020.

- A Tokyo
- B Beijing
- C Paris
- D Los Angeles

SEPT 2018 EC

1.1.20 The host of the Winter Olympic Games:

- A Sochi, Russia
- B Pyeongchang, South Korea
- C Beijing, China
- D Vancouver, Canada

CONTENT: POLITICAL SITUATIONS AND UNFORESEEN OCCURRENCES OF INTERNATIONAL SIGNIFICANCE**2014 NOV NSC**

- 1.1.21 The attack on the Westgate Mall in Kenya is an example of this type of unforeseen occurrence:



- A Recession
- B Terrorism
- C Natural disaster
- D Accident

2015 NOV NSC

- 1.1.22 Many trips to were cancelled because the country was hit by two major earthquakes, one shortly after the other, in April and May 2015.

- A South Africa
- B Italy
- C Brazil
- D Nepal

- 1.1.23 The crowning of Rolene Strauss from South Africa as Miss World is an example of a ...

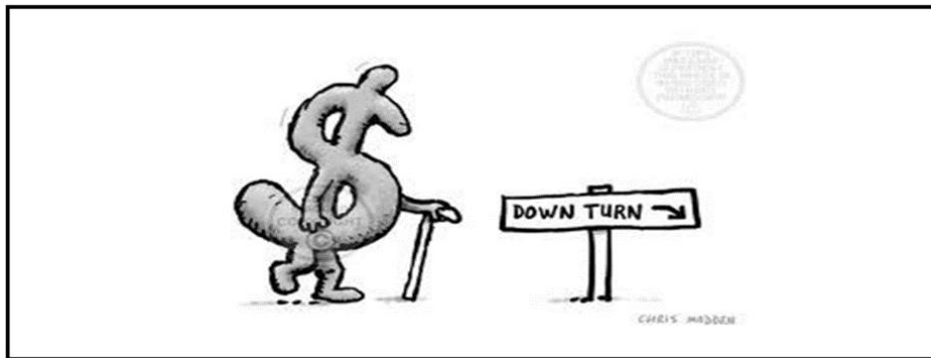


- A natural occurrence.
- B global event.
- C health indaba.
- D tourism trade show.

- 1.1.24 The eruption of a volcano on an island relying on tourism as their main source of income will have this negative impact:
- A Damaged access roads and fewer tourists visiting the resorts
 - B Heavy snowfalls and more tourists arriving for a skiing holiday
 - C Wild flowers to bloom and an increase in eco-tourists visiting the island
 - D A display of fireworks and fewer volunteers for the opening ceremony
- 1.1.25 General unrest, protests and strikes in South Africa lead to ...
- A job creation.
 - B loss of investor confidence.
 - C the strengthening of the local currency.
 - D positive publicity.

FEB-MARCH 2015 NSC

- 1.1.26 The cartoon below indicates ... which is an unforeseen occurrence.



- A protest action
 - B general elections
 - C global recession
 - D general unrest
- 1.1.27 ... can be regarded as a political situation that impacted negatively on the tourism industry in Kenya.
- A Diseases
 - B Earthquakes
 - C Terrorism
 - D A tsunami

FEB-MARCH 2016 NSC

- 1.1.28 The Ebola outbreak severely affected people on this continent:
- A Europe
 - B Africa
 - C Asia
 - D Australia

FEB-MARCH 2018 NSC

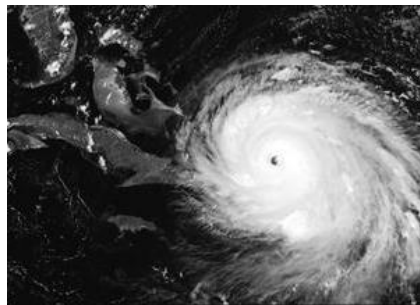
- 1.1.29 Tourists going to an area to see the damage caused by an unforeseen natural occurrence is an example of ... tourism.
- A sustainable
 - B responsible
 - C disaster
 - D leisure
- 1.1.30 A natural disaster where a huge wave of seawater destroys coastal tourist destinations:
- A Windmill
 - B Snow storm
 - C Tsunami
 - D Waterslide

MAY-JUNE 2018

- 1.1.31 The downgrading of South Africa's economic status by certain rating agents in 2017 resulted in ...
- A the strengthening of the value of the rand.
 - B a drop in the value of the United States dollar.
 - C an increase in the exchange rate of the rand.
 - D the economic recession in South Africa.
- 1.1.32 The demand for tourism will decrease in destinations where there is an increase in ...
- A civilian conflict.
 - B customer loyalty.
 - C social investment.
 - D local procurement.

MAY-JUNE 2019 NSC

- 1.1.33 The natural disaster shown in the satellite photograph of the Caribbean Islands below:



- A Earthquake
- B Landslide
- C Hurricane
- D Drought

SEPT 2014 EC

1.1.34 The following is an example of an unforeseen occurrence:

- A The death toll in the Syrian Civil War has exceeded 100 000
- B Spain's triumph in the 2010 FIFA World Cup final
- C The Marikana miners' strike resulted in 44 deaths
- D An outbreak with a new avian influenza A (H7N9) virus was reported in China

SEPT 2015 EC

1.1.35 Which ONE of the following unforeseen circumstances influencing the tourist industry in a country, can be regarded as a natural disaster?

- A Flight delays
- B Labour strikes in the country to be visited
- C Earthquakes
- D Global recession

1.1.36 An evaluation of the effect a tourism development or event will have on the environment is known as an ...

- A environmental impact assessment.
- B environmental evaluation impact.
- C environmental impact evaluation.
- D environmental evaluation assessment.

SEPT 2016 EC

1.1.37 In 2014 the government imposed a travel ban on all non-citizens travelling from Guinea, Liberia and Sierra Leone to prevent the spread of the ... virus into South Africa.

- A Ebola
- B Zika
- C Dengue
- D H1N1

SEPT 2017 EC

1.1.38 The abduction of 276 schoolgirls by Boko Haram in Nigeria in 2014 is an example of ...

- A a civil war.
- B general unrest.
- C an unforeseen occurrence.
- D terrorism.

SEPT 2019 EC

1.1.39 The Comrades Marathon is closely associated with this city:

- A London
- B Pietermaritzburg
- C New York
- D Cape Town

TOPIC: MAP WORK AND TOUR PLANNING**CONTENT: TOUR PLANS AND ROUTE PLANNING****NOV 2015 NSC**

1.1.40 The South African owner of a holiday resort in Durban would like to take his wife to the Swiss Alps for a skiing experience. He cannot plan the holiday during peak periods. Choose the most appropriate travel package below according to his needs:

- A A five-week Christmas holiday in a Swiss Alps resort
- B An Easter weekend break in the Swiss Alps
- C A helicopter-chartered flight over a ski resort in the Swiss Alps
- D A two-week holiday package in February, including ski lessons in the Swiss Alps

FEB-MARCH 2015

1.1.41 The most suitable tourist activity to match the profile of an adventure tourist:

- A A visit to the National Women's Monument in Bloemfontein
- B A sunset cruise on the Zambezi
- C Shark-cage diving in Gansbaai
- D A city tour on the Cape Town sightseeing open-top bus

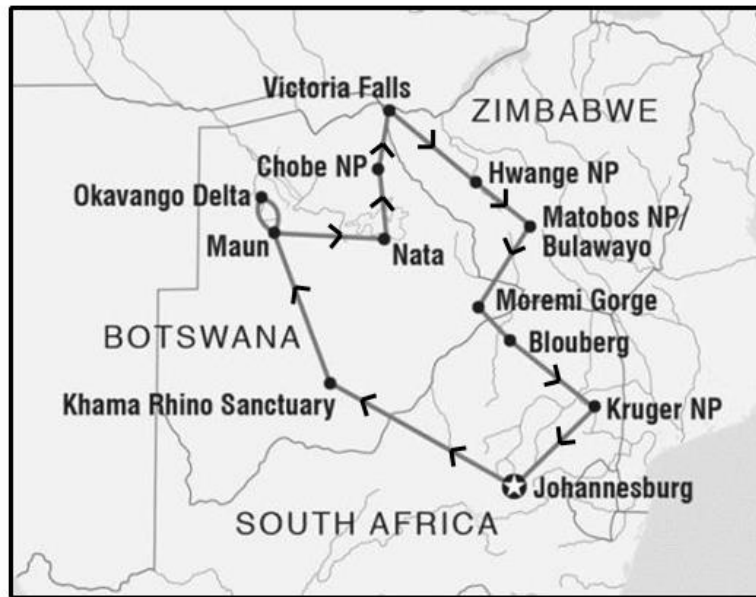
FEB-MARCH 2016 NSC

1.1.42 Environmentally friendly tourists are tourists who ...

- A are interested in extreme sporting activities.
- B escape city life to go 4x4 driving on the beach.
- C engage in responsible travel that conserves the environment.
- D learn as much as possible about their destination's customs, geography and culture.

FEB-MARCH 2018 NSC

1.1.43 The map below includes an itinerary that indicates the ...



[Source; Adapted from Google Maps]

- A route of the tour.
- B capital cities to be visited.
- C provinces to be visited.
- D casinos and spas on the tour.

MAY-JUNE 2018

1.1.44 Cultural tourists would prefer these activities to be included in their itinerary when they visit Mpumalanga:

- A Skiing and snow-boarding
- B Game viewing and traditional dancing
- C Going to the beach and snorkelling
- D Swimming with dolphins and canoeing

SEPT 2015 EC

1.1.45 Which ONE of the following is NOT an on-line route planner that is available to assist travellers in planning their journey?

- A Galileo GDS
- B TomTom
- C TripTik
- D AAA.com

SEPT 2017 EC

- 1.1.46 When planning an itinerary, a tour planner should take into account that travellers on international flights must check in for their flight ... prior to departure.
- A 30 minutes
 - B 90 minutes
 - C 2 to 3 hours
 - D 1 to 2 hours

CONTENT: COMPILING A DAY-BY-DAY ITINERARY**SEPT 2018 EC**

- 1.1.47 Which of the following is the LEAST likely to be a consideration when compiling a day-by-day itinerary for tourists?
- A Transport
 - B Accommodation
 - C Items that the tourists should pack in their luggage
 - D Attractions and activities

SEPT 2019 EC

- 1.1.48 The first consideration for a travel agent when planning an itinerary:
- A Travel documents
 - B Luggage and clothing
 - C Logical route planning
 - D Compiling a tourist profile

CONTENT: COMPILING A TOUR BUDGET**NOV 2014 NSC**

- 1.1.49 An 18 -year-old gap year student with a very limited budget would prefer to use this type of accommodation and transport:
- A Self-catering cottage and hired car
 - B Backpackers' lodge and public transport
 - C Luxury game lodge and public transport
 - D Three-star hotel and a shuttle

FEB-MARCH 2015

- 1.1.50 A cost to consider when compiling a tour budget:
- A Personal insurance for international travel
 - B Transfer between terminals at the same airport
 - C Complimentary hotel shuttle service
 - D An itinerary drawn up by a travel agent

FEB-MARCH 2018 NSC

1.1.51 A budget tourist would prefer this type of accommodation:

- A Luxury game lodge
- B Backpacker hostel
- C Exclusive spa and wellness resort
- D Upmarket boutique hotel

MAY-JUNE 2019 NSC

1.1.52 A recommended expense to be included in a travel budget:

- A Cigarettes
- B Alcohol
- C Insurance
- D Perfume

CONTENT: HEALTH AND SAFETY**NOV 2014 NSC**

1.1.53 What advice would you give to a tourist travelling to a country that has an outbreak of cholera?

- A Apply sun block regularly.
- B Drink bottled water.
- C Do not swim in the sea.
- D Take malaria tablets.

1.1.54 Name the function of the organisation represented by the following logo:



- A Informs tourists about health regulations
- B Informs tourism role-players about global tourism statistics
- C Regulates air travel in the aviation industry
- D Regulates trading in endangered species

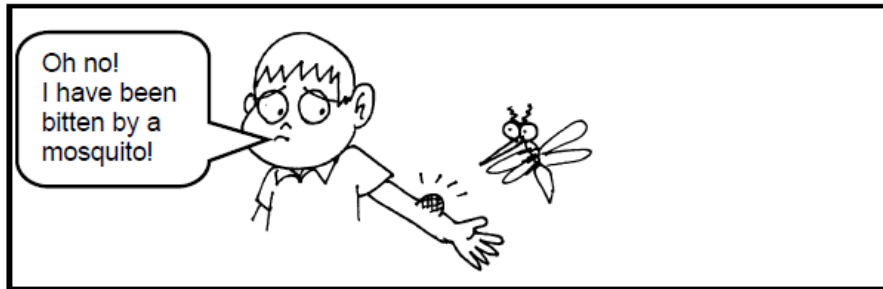
NOV 2015 NSC

1.1.55 Advice given to a tourist visiting a destination with a high risk for crime:

- A Carry cash instead of a debit card.
- B Do not carry any cash; carry only a debit card.
- C Carry only cash, as it is unsafe to go to an ATM.
- D Carry a small amount of cash and a debit card.

NOV 2016 NSC

1.1.56 The incident depicted below may cause this disease:



- A Hepatitis
- B Bilharzia
- C HIV
- D Malaria

NOV 2017 NSC

1.1.57 The disease caused by drinking contaminated (polluted) water:

- A Malaria
- B Yellow fever
- C Cholera
- D Bird flu

NOV 2018 NSC

1.1.58 A compulsory vaccination required when visiting certain African countries:

- A Bilharzia
- B Yellow fever
- C Hepatitis A
- D Malaria

FEB-MARCH 2015 NSC

1.1.59 The main symptoms of cholera:

- A Diarrhoea and vomiting
- B Red eyes and coughing
- C Swollen feet and aching back
- D Increase in appetite and thirst

FEB-MARCH 2017 NSC

1.1.60 Health advice a travel agent would give the team who would participate in the Tour de France cycle tour:

- A Know the road rules of this cycle tour.
- B Be familiar with the route of the cycle tour.
- C Carry a repair kit in case of punctured tyres.
- D Ensure sunblock is worn when cycling during the day.

MAY-JUNE 2018 NSC

1.1.61 Good advice given to a tourist regarding safety in a foreign country:

- A Always carry large amounts of cash.
- B Display expensive camera equipment.
- C Ensure visibility of room keys.
- D Carry copies of travel documents.

MAY-JUNE 2019 NSC

1.1.62 A health certificate required for travel-related diseases:

- A SARS
- B Ebola
- C Yellow fever
- D Diarrhoea

SEPT 2014 EC

1.1.63 The global health organisation concerned mainly with public health:

- A IAMAT
- B UNESCO
- C FTTSA
- D WHO

SEPT 2015 EC

1.1.64 A compulsory vaccination when travelling to Zambia:

- A Hepatitis A
- B Rabies
- C Yellow fever
- D Cholera

SEPT 2016 EC

1.1.65 A ... vaccination is available for people travelling internationally to high risk areas.

- A yellow fever
- B malaria
- C bilharzia
- D cholera

SEPT 2017 EC

1.1.66 International tourists should keep copies of ... separate from their luggage.

- A banking details
- B passports
- C customs regulations
- D travel allowances

1.1.67 An African country that is a yellow fever endemic area:

- A Egypt
- B Swaziland
- C Morocco
- D Democratic Republic of Congo

1.1.68 A disease contracted in the same way as HIV Aids:

- A Hepatitis A
- B Hepatitis B
- C Malaria
- D Cholera

SEPT 2018 EC

1.1.69 A tourist travelling in South Africa during the summer months should take the following precautions:

- A Use sunblock and wear clothing for protection from the sun
- B Always drink bottled water between 12:00 and 14:00
- C Keep valuables in a bag carried around the neck
- D Ensure that he/she has a passport

SEPT 2019 EC

1.1.70 A symptom of malaria:

- A Swollen feet
- B Extreme tiredness
- C Yellow colour of the skin and eyes
- D Headaches, fever, pains in the muscles and joints

1.1.71 A disease that cannot be prevented by vaccination:

- A Bilharzia
- B Yellow Fever
- C Hepatitis A
- D Hepatitis B

CONTENT: TRAVEL DOCUMENTATION**NOV 2016 NSC**

1.1.72 A tourist would like to carry his hunting rifle onto the aircraft as part of his hand luggage. The rifle will be regarded as a ... item.

- A prohibited
- B restricted
- C duty-free
- D checked

NOV 2018 NSC

1.1.73 This type of visa applied for when travelling to European Union countries:

- A Brazilian
- B Scottish
- C Schengen
- D American

1.1.74 An IDP is required to ...

- A participate in local cultural activities.
- B fly a light aircraft in a foreign country.
- C hire a vehicle at certain foreign destinations.
- D participate in white water rafting activities.

FEB-MARCH 2015 NSC

1.1.75 A South African applying for this travel document needs to submit a South African identity document, a completed application form and pay a fee:

- A Passport
- B Health certificate
- C International driving permit
- D Visa

1.1.76 A South African tourist should declare the following items before leaving his home country:

- A Cameras, laptops, iPads
- B Perfumes, cosmetics, medicine
- C Documents, magazines, files
- D Fruit, meat products, dairy products

1.1.77 The term used for the amount of currency a South African tourist is permitted to take out of the country in one year:

- A Prohibited goods
- B Travel allowance
- C Restricted goods
- D Travel allocation

FEB-MARCH 2016 NSC

- 1.1.78 A tourist will follow the green channel on arrival at an international airport when he/she has ...
- A something to declare.
 - B nothing to declare.
 - C prescription drugs to declare.
 - D travel documentation to present.
- 1.1.79 To ensure that passengers comply with customs regulations at an international airport when they go through the green channel, customs officers will ...
- A randomly scan all hand luggage.
 - B run a personal security check on all passengers disembarking from an aircraft.
 - C conduct a body search of passengers.
 - D conduct random searches of passengers and their checked luggage.
- 1.1.80 Duty-free goods are not taxed because ...
- A taxes are allowed at airports.
 - B shops at the national airports are exempt from taxes.
 - C the tax is already included in VAT.
 - D shopping is done in international territory.
- 1.1.81 A South African outbound international tourist who wants to visit China will apply at the for a holiday visa.
- A Department of Home Affairs
 - B National Department of Tourism
 - C Asian Embassy
 - D Chinese Embassy
- 1.1.82 A South African outbound international tourist would apply to the ... for a transit visa when changing flights at Heathrow International Airport in London.
- A Department of Economic Affairs
 - B British Embassy
 - C Department of Home Affairs
 - D American Embassy

FEB-MARCH 2017 NSC

1.1.83

SARS confiscated US\$78 million hidden in luggage at the international arrivals terminal at the OR Tambo International Airport.

The headline above appears in a local newspaper. This incident will be handled by the police and ... officials at the airport.

- A check-in
- B custom
- C duty-free
- D health

1.1.84 Goods that require a permit when you enter South Africa:

- A Narcotics
- B Endangered plant species
- C 200 packets of cigarettes
- D 3 litres of wine

MAY-JUNE 2018 NSC

1.1.85 The travel document attached to a passport allowing entry into a foreign destination:

- A International driving license
- B Tourist visa
- C Yellow fever certificate
- D Birth certificate

1.1.86 Travel allowances are part of ... regulations of a country.

- A visa
- B passport
- C customs
- D exchange

MAY-JUNE 2019 NSC

1.1.87 An example of a duty-free allowance:

- A Two litres of wine per person
- B Plants taken into a country
- C Fireworks or explosives
- D Medication without a prescription

SEPT 2014 EC

- 1.1.88 A travel document that gives travellers permission to stop in a country en route to another country.
- A Tourist visa
 - B Private visa
 - C Transit visa
 - D Courtesy visa
- 1.1.89 A stipulated amount of money that a South African citizen travelling abroad can exchange for foreign currency in a calendar year:
- A Travel allowance
 - B Foreign currency
 - C Investment allowance
 - D Duty free goods
- 1.1.90 Which of the following are regarded as duty free items by SARS?
- A 2 months' supply of medicine for personal use
 - B 1 kg biltong/dried meat
 - C 1 rhino horn weighing 1,3 kg
 - D Up to 2 litres of wine

SEPT 2015 EC

- 1.1.91 This is the maximum amount of rand a South African citizen travelling abroad can exchange for foreign currency in a year:
- A R1 000 000
 - B R5 000
 - C R25 000
 - D R160 000
- 1.1.92 When approaching customs, choose the red channel if ...
- A you have nothing to declare.
 - B you are not carrying goods or gifts on behalf of others.
 - C you have not kept receipts for the goods you bought abroad.
 - D you are not carrying goods that have been bought to be resold.

SEPT 2016 EC

- 1.1.93 Required documentation for a tourist planning to drive a vehicle in a foreign country:
- A UTC
 - B IDP
 - C WHO
 - D UNIVISA

- 1.1.94 The most reliable place to gain information about customs regulations when travelling to South Africa:
- A www.info@gov.co.za
 - B Green channel at customs office upon arrival
 - C Friends or relatives that have travelled to South Africa
 - D www.sars.gov.za
- 1.1.95 The best place to obtain information on health precautions when planning a trip:
- A Local hospital
 - B Travel clinic
 - C Internet
 - D Getaway magazine

SEPT 2017 EC

- 1.1.96 Upon arrival in South Africa a 100 ml bottle of perfume is regarded as ... by customs.
- A goods to declare
 - B duty-free goods
 - C prohibited goods
 - D restricted goods
- 1.1.97 South African bank notes to the value of R10 000 is regarded as ... by SARS.
- A goods to declare
 - B duty-free goods
 - C prohibited goods
 - D restricted goods

SEPT 2018 EC

- 1.1.98 The document that validates your South African driver's licence in several languages:
- A IDP
 - B IDL
 - C Schengen visa
 - D WHO

SEPT 2019 EC

- 1.1.99 The requirement, introduced in 2016 by the Department of Home Affairs, that parents visiting South Africa with a child had to produce this particular document had a negative impact on inbound tourism.
- A Passport
 - B Health certificate
 - C Unabridged birth certificate
 - D IDP

1.1.100 When wanting to drive a vehicle in a foreign country a traveller must obtain a ... before leaving his/her country.

- A health certificate
- B IDL
- C travel allowance
- D IDP

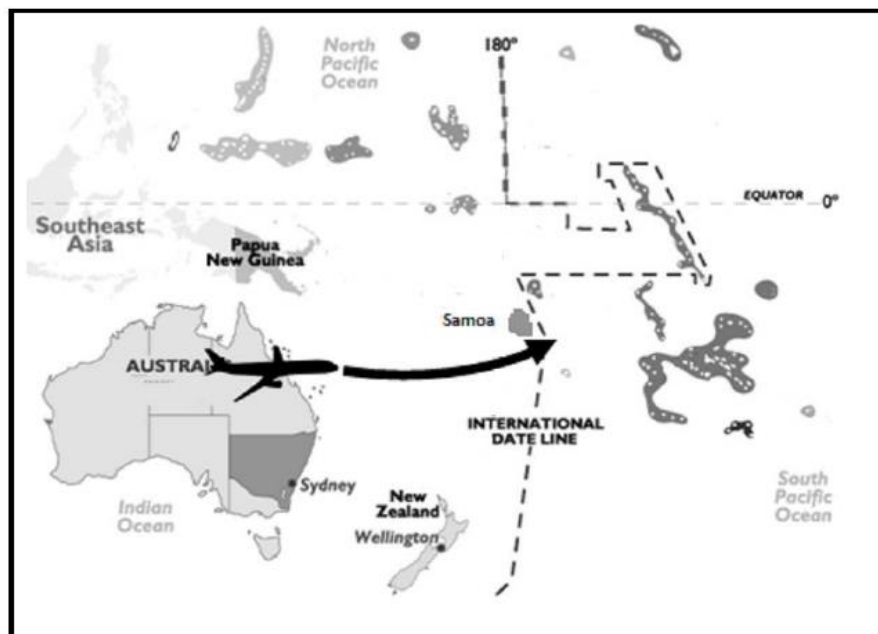
CONTENT: WORLD TIME ZONES

NOV 2014 NSC

1.1.101 A reason why many countries in the Northern Hemisphere practise DST:

- A To avoid having too many time zones
- B To have more leisure daylight hours
- C To have fewer leisure daylight hours
- D To prevent an outbreak of avian flu

1.1.102 Tourists flying from west to east, according to the direction shown on the map below, will ...



- A gain a day by crossing the IDL.
- B lose a day by crossing the IDL.
- C lose one hour by crossing the IDL.
- D neither lose nor gain a day by crossing the IDL.

1.1.103 The time of a country situated on the 160°E line of longitude will be ...compared to the time of a country situated on the 30°E line of longitude.

- A be ahead in time
- B be 11 hours behind in time
- C have the same time
- D be 11 hours ahead in time

NOV 2017 NSC

1.1.104 San Francisco (UTC -8) lies ... of Beijing (UTC +8).

- A north
- B south
- C east
- D west

NOV 2018 NSC

1.1.105 When practising daylight saving time (DST), participating countries are required to adjust their clocks ...



- A backward by ONE hour in summer.
- B forward by ONE hour in winter.
- C forward by ONE hour in summer.
- D backward by TWO hours in summer.

FEB-MARCH 2015 NSC

1.1.106 A travel agent explains to a tourist how to adjust his watch when DST is practised in a particular country:

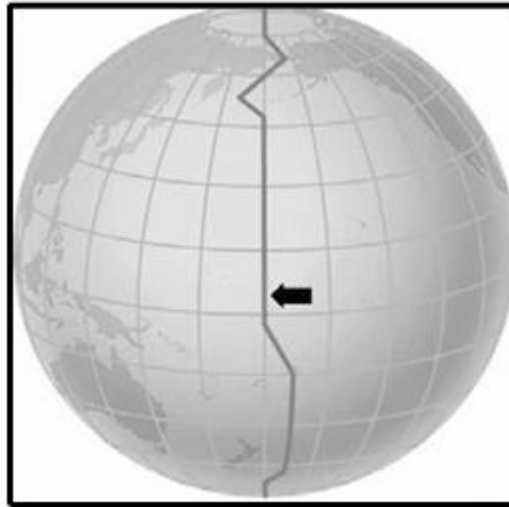
- A Put his watch 1 hour forward
- B Put his watch 1 hour back
- C Leave his watch as is
- D Change his watch to UTC time

1.1.107 South Africa is located ... of the UTC.

- A east
- B west
- C south
- D north

FEB-MARCH 2017 NSC

1.1.108 The line shown on the globe below indicates the ...



- A IDL.
- B DST.
- C GMT.
- D UTC.

SEPT 2017 EC

1.1.109 The International Date Line (IDL) is an artificial line that lies approximately ... from the Universal Time Coordinate.

- A 360°
- B 180°
- C 90°
- D 270°

1.1.110 Daylight saving time (DST) is the practice whereby clocks in a country are set one hour ahead of standard time during ...

- A winter.
- B spring.
- C autumn.
- D summer.

SEPT 2018 EC

1.1.111 Which of the following is NOT a reason for practising daylight saving time?

- A To reduce energy consumption.
- B To increase daytime hours for increased productivity.
- C To increase leisure hours.
- D To ensure that travellers check in on time for their flight.

CONTENT: CALCULATIONS OF WORLD TIME ZONES WHEN TRAVELING BETWEEN COUNTRIES**NOV 2016 NSC**

1.1.112 The United Kingdom practised DST from 1 March 2015 until 25 October 2015. The time difference between South Africa and the United Kingdom during this time was ...

- A two hours.
- B one hour.
- C three hours.
- D zero.

1.1.113 A passenger who flies on a 10-hour flight from South Africa to the United Kingdom will suffer from this travel-related condition:

- A Jet fatigue
- B Jet lag
- C Jet stress
- D Jet phobia

NOV 2017 NSC

1.1.114 A symptom of jet lag:

- A Itchy skin
- B Increased appetite
- C Loss of appetite
- D Skin discolouration

FEB-MARCH 2015 NSC

1.1.115 Jet fatigue refers to ...

- A the aircraft being worn out after a long-haul flight.
- B tiredness experienced by a passenger after a long-haul flight.
- C discomfort experienced after crossing many time zones.
- D passengers who are tired of moving from the landside to the airside of an airport.

1.1.116 When travelling from Cape Town (+2) to Dallas (-6), the time difference is ...

- A 8 hours earlier.
- B 6 hours earlier.
- C 8 hours later.
- D 6 hours later.

FEB-MARCH 2017 NSC

1.1.117 The traveller in the photograph below suffers from jet lag. This condition was caused by travelling from ...



- A London to Sydney.
- B Bangkok to Sydney.
- C Rome to London.
- D Moscow to Rome.

FEB-MARCH 2018 NSC

1.1.118 Advice given to tourists before long-haul flights to minimise the impact of jet lag:

- A Eat a heavy meal before the flight.
- B Do intense exercises before boarding.
- C Enjoy a cup of strong coffee the night before.
- D Get a good night's sleep before departure.

1.1.119 Beijing (+8) is ... Lima (-5).

- A ahead of
- B on the same line of longitude as
- C behind
- D 5 lines of longitude west of

MAY-JUNE 2019 NSC

1.1.120 A flight from Alaska to China may cause a sports tourist to suffer from ...

- A tuberculosis.
- B cholera.
- C jet lag.
- D malaria.

SEPT 2014 EC

1.1.121 The time difference between Beijing and London is ...

- A 18 hours.
- B 3 hours.
- C 8 hours.
- D 6 hours.

1.1.122 What is the time in Sydney, Australia if it is 10:00 in South Africa?

- A 6 pm
- B 18:00
- C 02:00
- D 2 am

1.1.123 When doing time zone calculations that involve flying time, if you want to calculate the time of arrival of the flight at its destination you must ... the number of hours flying time.

- A add
- B subtract
- C multiply
- D divide

SEPT 2015 EC

1.1.124 The time in New York in summer if it is 15:00 in South Africa:

- A 21:00
- B 09:00
- C 22:00
- D 08:00

SEPT 2016 EC

1.1.125 The time in Johannesburg if it is 14:00 in Rio de Janeiro:

- A 19:00
- B 09:00
- C 19h00
- D 09h00

SEPT 2018 EC

1.1.126 A symptom of jet fatigue is ...

- A swollen legs and feet.
- B dehydration and irritability.
- C extreme tiredness.
- D headaches and irritation of the nasal passages.

1.1.127 The time in Sydney, Australia (+10) if it is 11:00 in Johannesburg, South Africa (+2) on 25 December:

- A 02:00
- B 03:00
- C 19:00
- D 20:00

SEPT 2019 EC

1.1.128 The time in New York, USA (-5) when the clock strikes 00:00 at New Year in Port Elizabeth, South Africa (+2) on 1 January:

- A 18:00
- B 07:00
- C 17:00
- D 06:00